

# CARDIOLOGY FROM THE HEART

2009-10 Annual Report

---



MONTREAL  
H E A R T  
I N S T I T U T E  
F O U N D A T I O N



# Honouring One of Our Young Heroes

---

The Head of MHI Research, Dr. Jean-Claude Tardif (right) is seen here with Paul Khairy, MD, PhD, FRCPC, one of North America's youngest and brightest clinician-scientist-mentors. Winner of Canada's prestigious 2009 Top 40 under 40™ Award, Dr. Khairy has put his valuable knowledge and skills at work as Director of the Montreal Heart Institute's Adult Congenital Heart Centre.

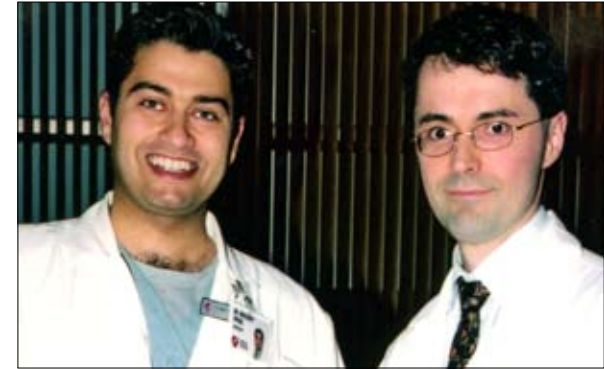
The Institute and its Foundation were among the first to recognize Dr. Khairy as a young visionary whose potential to inspire and empower scientists, teachers, clinicians, patients and families would lead to new treatments and avenues of hope for people born with heart disease.

"This award reflects the unique climate of excellence that pervades the Montreal Heart Institute in clinical and academic innovation, training and mentorship, and empathic patient care. I feel extremely fortunate to have surrounded myself with outstanding individuals and world-class adult congenital heart disease, electrophysiology, and research teams.

The Montreal Heart Institute Foundation and its many generous donors have contributed integrally to these successes. This support began early in my career, with the first Bal du Coeur fellowship in 2002, and continued with a considerable Bal du Coeur Congenital Heart Fund and a young investigator award that jump-started our research program and led to significant inroads in our field.

Finally, I would like to dedicate this award to our patients. Many of whom I have the privilege of caring for were born with severe heart defects, overcame tremendous challenges, and defied all odds. They are the true heroes, with inspirational life stories. I hope that this award will raise awareness about the need for people born with heart disease to seek life-long specialized care and the importance of dedicated programs to advance knowledge and improve quality of life."

*Paul Khairy,  
Director, MHI Adult Congenital Heart Centre  
2009 Canada Top 40 Under 40 Award Recipient*



*Photo: MHI Audiovisual*

# 2009-10 Annual Report

## Table of Contents

---

Mission and Vision	2
Letter from the President and the Executive Director	3
Board, Committees and Staff	4
Letter from the Montreal Heart Institute	7
Overview of Fundraising Activities	11
Fostering Excellence	19
Financial Statements	26
Fostering Excellence	
New Surgery Wing	8
Biobank	13
Percutaneous Aortic Valve Implantation Program	14
Prevention	20
Magnetic Resonance Imaging	24
Automated Medication Dispensing	30

# Mission

---

Raise and manage funds to support research, patient care, training, prevention and technological development at the Montreal Heart Institute. Promote the excellence of an institution at the service of the Quebec community.

# Vision

---

With our values and commitment, we foster the innovative approach and sustainability of the Montreal Heart Institute, a world-renowned, leading edge cardiology centre.

We rely on the commitment, integrity, openness and respect of our governors and staff to ensure bold and effective results, as well as good stewardship, accountability and transparency when managing the funds entrusted to us by our donors and partners.

We recognize and appreciate the great value and priceless contribution of our volunteers.

# Letter from the Chair of the Board and the Executive Director

---



The Montreal Heart Institute and its Foundation share a vision, one that focuses on innovation in the treatment of cardiovascular disease. It was in 1954 that MHI founder Dr. Paul David first combined basic research and clinical research under one roof. His comprehensive approach to knowledge-gathering transcended boundaries and led to the creation of a unique environment where patients and their families find exceptional care, outstanding expertise and, above all, hope.

If Dr. Paul David planted the seeds of innovation, the Montreal Heart Institute Foundation (MHIF) helped them grow from the very first major gift donated by philanthropist J.-Louis Lévesque in 1977. A perfect example of innovative support is the Foundation's foresight in buying the artificial heart that saved the life of influenza victim Jean Gravel, as he waited for a heart donor in 2002<sup>1</sup>.

In this Annual Report you will see several examples of innovative projects that came to fruition thanks to the generosity of the Foundation's many donors and partners: the enhancement of the MRI scanner, a percutaneous aortic valve implantation program, decentralized automated medication dispensing cabinets, the MHI Biobank, the Institute's prevention outreach, as well as its brand new state-of-the-art surgery wing.

The MHI's needs have continued to grow in 2009-10, and despite difficult economic times, the Foundation has stayed the course in its quest to fund research, patient care, teaching, prevention and ultraspecialized technology for a total of \$7.2 million.

Of the \$15 million raised in 2009-10, \$6.5 million were pledges that came through from the \$70 million Heart Beat for the Future capital campaign. Over 43,100 individuals, including 10,200 new annual campaign benefactors, donated a total of \$2.8 million. And, several members of the Foundation's Visionary Group who wanted to leave their mark by giving back to society bequeathed a total of \$1.4 million during the year.

Events organized in 2009-2010 by the Foundation and dedicated partners were also hugely successful: Grand Bal des Vins-Cœurs - \$1.3M; two Bal du Cœur events - \$780K; \$2 Straight to the Heart campaign organized by IGA merchants - \$350K; golf tournaments - \$220K; Soirée des Cœurs Universels - \$87K; other third-party events - \$40K; and, our income generating projects - \$1.6M.

Thanks to the heartfelt commitment of thousands of individuals, the Foundation's achievements in 2009-2010 have helped cardiology reach newer horizons. Enjoy the report.

A handwritten signature in black ink, appearing to read "Louis A Tanguay".

**Louis A Tanguay**  
Chair of the Board / MHI Foundation

A handwritten signature in black ink, appearing to read "Danielle Pagé".

**Danielle Pagé**  
Executive Director / MHI Foundation

<sup>1</sup> Watch the touching story of MHI heart transplant patient Jean Gravel in "Through Their Eyes" at [www.mhifoundation.org](http://www.mhifoundation.org).

# Board and Committees

---

Stéphane Achard <sup>1</sup>	Mathieu L'Allier <sup>6</sup>
André Bérard <sup>1</sup>	Jean Lambert <sup>6</sup>
Christiane Bergevin <sup>1</sup>	Daniel Lamarre <sup>1</sup>
Michel Bernier <sup>1-2</sup>	Eric Lamarre <sup>1</sup>
Claude Blanchet <sup>1-2-3-4-7</sup>	Jean-Claude Lauzon <sup>1-2-3-9</sup>
Yvon Bolduc <sup>1</sup>	Alain Lellouche <sup>1</sup>
Stéphane Boisvert <sup>1-2</sup>	Monique Léonard <sup>1-2-5</sup>
Michèle Boutet <sup>1-5-8</sup>	Yves J. Leroux <sup>6</sup>
Marc Y. Bruneau <sup>1-8</sup>	Rémi Marcoux <sup>1-2-9</sup>
Robert Busilacchi <sup>1-2-4</sup>	L. Jacques Ménard <sup>1-2</sup>
Marvin Carsley <sup>1</sup>	Tony Meti <sup>1</sup>
Vincent Castellucci <sup>4</sup>	Avrum Morrow <sup>1</sup>
France Chrétien Desmarais <sup>1-2-3-4</sup>	Brian M. Mulrone y <sup>1</sup>
André Courville <sup>1-8</sup>	Jacques O. Nadeau <sup>1-8</sup>
Léon Dontigny <sup>1-4</sup>	Danielle Pagé <sup>3-4-5-6-7-8-9</sup>
Christiane Dubé <sup>5</sup>	Luc Paiement <sup>1</sup>
François Duffar <sup>1</sup>	Claude Paquin <sup>1</sup>
Pierre N. Dumont <sup>1-2-6</sup>	Robert Paré <sup>1-2-3-9</sup>
Robert Dutton <sup>1</sup>	Marc Poulin <sup>1</sup>
Santo A. Fata <sup>1</sup>	John A. Rae <sup>1</sup>
Claude Fontaine <sup>1-2-6</sup>	Henri-Paul Rousseau <sup>1-2-7</sup>
Sylvie Fontaine <sup>1-2-8-9</sup>	Jean Royer <sup>1-2-4</sup>
Raymond Fortier <sup>1-2-4-6-8</sup>	Guy Savard <sup>1</sup>
Gaétan Frigon <sup>1-2-5-7</sup>	Louis A Tanguay <sup>1-2-3-4</sup>
Diane Hamel <sup>6</sup>	Jean-Claude Tardif <sup>1-4</sup>
Mel Hoppenheim <sup>1</sup>	Robert Trempe <sup>1-5</sup>
Martin Juneau <sup>5</sup>	François Veillet <sup>1-2-4-8</sup>
Christena Keon-Sirsly <sup>1</sup>	Claire Webster <sup>1-5</sup>
Deep Khosla <sup>1-7-8</sup>	

- 1 Board of Directors
- 2 Executive Committee
- 3 Nominating Committee
- 4 MHIF – MHI Joint Committee
- 5 Communications/Marketing/Events
- 6 Planned Giving Committee
- 7 Investment Committee
- 8 Audit and Finance Committee
- 9 Human Resources Committee

Note: Committee mandates can be found at [www.mhifoundation.org](http://www.mhifoundation.org).

# Executive Committee and Officers

---

## Officers

---

**Louis A Tanguay**  
President

---

**Raymond Fortier**  
Vice-president and Treasurer

---

**Henri-Paul Rousseau**  
Vice-president

---

**Robert Paré**  
Secretary

---

**Danielle Pagé**  
Executive Director

---



Michel  
Bernier



Pierre N.  
Dumont



Jean-Claude  
Lauzon



Robert  
Paré



Claude  
Blanchet



Claude  
Fontaine



Jean-Yves  
Leblanc



Henri-Paul  
Rousseau



Stéphane  
Boisvert



Sylvie  
Fontaine



Monique  
Léonard



Louis A  
Tanguay



Robert  
Busilacchi



Raymond  
Fortier



Rémi  
Marcoux



François  
Veillet



France  
Chrétien  
Desmarais



Gaétan  
Frigon



L. Jacques  
Ménard

# Foundation Team

---



Photo: MHI Foundation

**Gilles Babin**

Director of Finance

**Guylaine Banville**

Director, Direct Mail and Database Management

**Anne-Marie Bessette**

Data Entry Operator

**Michèle Boyer**

Accounting and Human Resources Technician

**Elsa Desjardins**

Director, Events and Fundraising Projects

**Carole Gray**

Events and Fundraising Projects Coordinator

**Jocelyne Guignard**

Clerk-Receptionist

**Martine Lefebvre**

Interim Director, Events and Fundraising Projects

**Kellie Ann MacDonald**

Data Entry Operator

**Johanne McDonald**

Director, Development and Communications

**Isabelle Nicolas**

Data Entry Operator

**Danielle Pagé**

Executive Director

**Christine Plantier**

Assistant to the Executive Director

**Isabelle Rousseau**

Administrative Assistant, Events and Fundraising Projects

**Gilles Spinelli**

Planned Giving Officer

**Isabelle Tremblay**

Communications Officer

# Letter from the Montreal Heart Institute

---



We at the Montreal Heart Institute have always considered ourselves extremely fortunate to be able to count on the sustained and substantial support we receive from the Foundation. The commitment of Foundation volunteers, Board members and staff comes through clearly and attests to their strong support and recognition of the Institute's work and accomplishments.

The 2009-2010 Annual Report provides further proof that the Foundation's contributions enable us to make very real progress, especially in terms of acquiring equipment and funding special projects. Furthermore, these contributions are proof of the commitment of Quebec's leaders to our mission of excellence. The Foundation's work has a remarkable leveraging effect on all our development projects. As such, there is no denying that with the Foundation at our side we feel confident and optimistic in launching our new *2010-2015 Strategic Plan: Staying the Course on the Road of Excellence*.

On behalf of all who strive every day to fulfill the Montreal Heart Institute's mandate in prevention, patient care, research and innovation, teaching and evaluation, please accept our deepest appreciation and immense gratitude for the Foundation's sustained support.

A handwritten signature in black ink, appearing to read "Pierre Anctil".

---

**Pierre Anctil**  
Board Chair

A handwritten signature in black ink, appearing to read "Robert Busilacchi".

---

**Robert Busilacchi**  
Executive Director

# New Surgery Wing

---

*The Foundation's contribution as at March 31st, 2010: \$905,000*

On September 21st, 2009, Dr. Michel Pellerin's team performed its first surgery in the Montreal Heart Institute's new ultraspecialized surgery wing, which will soon have six operating rooms (ORs). The MHI handles some 30 to 40 complex cases every week in the four ORs that are currently operational.

Medical staff and engineers joined forces to create a state-of-the-art surgical environment, the first of its kind in Quebec. Be it the equipment, the layout of an OR, the ventilation, sterilization or lighting systems, everything was designed to facilitate the work of a multidisciplinary team. As a result, more lives will be saved.

When surgery begins, the meter starts running: "Every move we make has to be accurate and precise. Every second counts, and the environment has to minimize patient risk while promoting rapid post-operative recovery," says Dr. Pellerin, Chief of Surgery.

New monitors give everyone—surgeons, anaesthesiologists, perfusionists and other members of the surgical team—a clear, real-time view of the surgery, something that was impossible before the new monitoring system was installed.

Wall to wall windows lend a distinct feel to the ultraspecialized lighting system in every OR. "We spend hours standing without losing concentration. Natural light relaxes us and makes the working environment more pleasant," says Suzie Bouchard, Coordinator of the Operating Room Department and Sterilization. Moreover, the rooms are now spacious enough to accommodate a team of ten or more professionals, as well as students.

Future projects include integrating an operating table system to facilitate patient transfer and developing a system to manage the data collected during surgery

The Foundation is particularly interested in the implementation of a new robotics and imaging hybrid suite, the first of its kind in Canada, and is currently fundraising to that end. Planned for 2010-2011, this new suite will enable the MHI to perform minimally invasive endovascular aortic surgery and transapical aortic valve implantation.

**"Thanks to the transformation of our surgical environment, it is safe to say that the Montreal Heart Institute is truly practicing 21<sup>st</sup> Century cardiac surgery."**

**- Dr. Michel Pellerin, MHI Chief of Surgery**

Aaron Fish, with the assistance of Keir Surgical, donated a turbo surgical light, the first high-intensity plasma headlight system of its kind in Canada and a gift most appreciated by Dr. Michel Pellerin and his team (l. to r.: Michel Pellerin, Aaron Fish and Danielle Pagé). ►

*Photo: MHI Foundation*



# Heart Beat for the Future

---

The Foundation launched the Heart Beat for the Future capital campaign in 2006 with a view to fostering the Montreal Heart Institute's innovative approach and contributing to its sustainable development. The Foundation is contributing some \$70M to the Institute's Investing in Excellence development plan, of which \$6.5M was donated in 2009-2010.

## \$5 M and over

---

Michel Saucier et Gisèle Beaulieu

## \$2 M to \$5 M

---

Bell Canada  
Marissa & Francesco Bellini  
BMO Financial Group  
Boston Scientific Canada Ltd.  
Paul & Jacqueline Desmarais  
Fondation J.-Louis Lévesque  
Hydro-Québec  
The J. W. McConnell Family Foundation  
Power Corporation of Canada  
St. Jude Medical Canada Inc.

## \$1 M to \$2 M

---

Claudine & Stephen Bronfman  
CGI  
CN  
André Desmarais & France Chrétien Desmarais  
Hélène & Paul Desmarais, Jr.  
Fondation J.A. De Sève  
Fondation Jeunesse-Vie  
Great-West Life, London Life, Canada Life  
J. Armand Bombardier Foundation  
Mouvement des caisses Desjardins  
National Bank of Canada  
RBC Foundation

Carolyn & Richard Renaud  
Saputo Inc.

## \$500 K to \$1 M

---

CIBC  
Peter Munk Charitable Foundation  
Rio Tinto Alcan  
Rona Inc.  
Sanofi-aventis Canada Inc.  
Scotia Bank  
TD Bank Financial Group

## \$100 K to \$500 K

---

Aaron and Wally Fish Family Foundation  
Atco Group  
CAE Inc.  
Canam Manac Group  
Couche-Tard  
Dalfen Family Foundation  
Estate of the late Jean-Denis Laramée  
Foundation of Lemaire Family  
Rosemary & Mel Hoppenheim  
Fondation Fernand R. Bibeau  
G. Wallace F. McCain  
Gaz Métro  
Jean-Guy Hamelin  
Kaycan Ltd.  
Laurentian Bank Foundation  
Manulife Financial  
Maple Leaf Foods  
Metro Inc.

MHI Associated Cardiologists  
Nussia & Andre Aisenstadt Foundation  
Port of Montreal Authority  
Pratt & Whitney Canada  
Sun Life Financial Inc.  
The Sandra and Leo Kolber Foundation  
Transcontinental Inc.

## \$50 K to \$100 K

---

Arcelor Mittal Canada Inc.  
Fondation Marcel et Rolande Gosselin  
Daniel Lamarre  
Lieberman Tranchemontagne  
Luigi Liberatore Foundation  
Merck Frosst  
MHI Associated Anesthesiologists  
Monitor Angelcare  
Samson Bélair/Deloitte & Touche

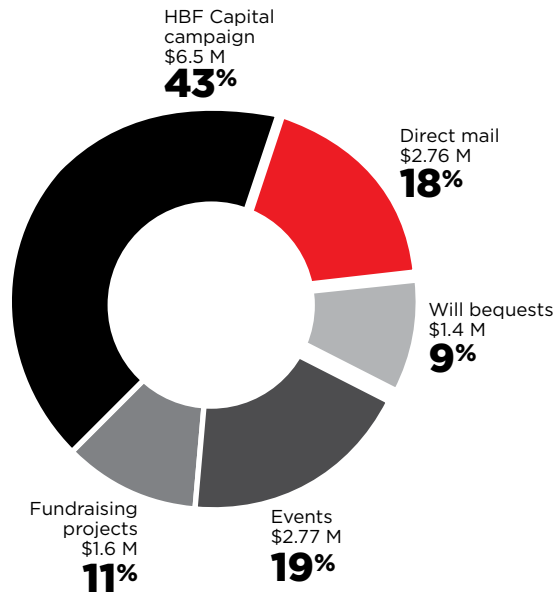
## \$25 K to \$50 K

---

Air Liquide Canada  
Construction Albert Jean Ltée.  
Dessau Inc.  
Fondation Jeanne-Mance  
Louis A Tanguay  
Roberfrag Inc.

We also thank the numerous donors who have contributed up to \$25,000 to the Heart Beat for the Future capital campaign.

# Overview of Fundraising Activities



Gross revenues for fiscal year 2009-10 totalled \$15M. Core fundraising activities remain the Heart Beat for the Future capital campaign, direct mail, will bequests, and events organized by the Foundation and third parties.

## Gross Revenues 2009-2010

Heart Beat for the Future capital campaign	\$6,495,346	43%
Direct mail	\$2,759,006	18%
Will bequests and other planned giving	\$1,409,837	9%
<b>Events</b>		
Grand Bal des Vins Cœurs	\$1,285,551	
Bal du Cœur (April 2009 and February 2010)	\$781,359	
\$2 Straight to the Heart campaign with IGA merchants	\$352,539	
Golf tournaments	\$218,650	
Soirée des Coeurs Universels	\$86,950	
Other third party events	\$38,448	
	<b>\$2,763,497</b>	<b>19%</b>
<b>Fundraising Projects</b>		
MHI parking lots	\$879,410	
Gift shop	\$269,371	
Travel lottery	\$93,126	
Lotomatique	\$38,720	
Other projects	\$317,038	
	<b>\$1,597,665</b>	<b>11%</b>
	<b>\$15,025,351</b>	<b>100%</b>

# Will Bequests

---

Wanting to give back to society, several Foundation visionaries left their philanthropic footprint by bequeathing a total of \$1.4 M toward MHI activities. This made it a record year in planned giving.

## 2009-2010 Will Bequests

BOISJOLI, Albertine  
BOUTHILLIER, Alma  
CIRCÉ, Paul  
DANCOSTE, Louise  
DUSSEAULT, George et Gabrielle (Dupré)  
FABIELLO, Carmine  
FILION OUIMET, Yolande  
FONK TWARDY, Lorraine  
FORTÉ DAGENAIS, Paulette  
GARGIONI, Paul  
GERVAIS, Edith  
GIGLIO KEMP, Inez  
GOYETTE, Adrien  
LAFONTAINE, Marie Louis

LAMANQUE (Laframboise), Cécile  
LANGUÉRAND, Liette  
LAPOINTE, Jeannine  
LEMIEUX, Guy  
MESSIER, André  
MORENCY, Annette  
PELLETIER, Hélène  
POITRAS, Huguette Fernande  
PROVENÇAL, Gisèle  
RHÉAUME, Émilien  
SÉGUIN, Yvette  
SHOIRY-DENIS, Adèle  
VIGNEAULT, Bernadette  
WHITE, Marjorie  
YELLE, Aline

# Direct Mail

---

In 2009-2010, the number of direct mail donations increased by 2.66% despite the recession. Some 34,100 from all over the province, including 10,200 new contributors, made 55,000 donations for a total of \$2.8M in gross revenues. These results were slightly down from 2008-2009, but higher than the five-year average.

# MHI Biobank

---

In 2009, the MHI launched one of the most ambitious projects in the field of genetics: the creation of a 30,000-donor Biobank, which is already being used by Institute researchers and their partners to better understand the genetic bases of cardiovascular disease. In turn, the MHI's genetic research will be shared worldwide to develop better diagnostic and prevention tools and more effective treatments. To date, the Foundation has contributed \$1.3 million to this innovative project.

“The Biobank’s potential for research and discoveries is enormous, indeed without limit. This vital resource provides MHI researchers with a distinct advantage by providing quick access to quality data and samples. Thanks to the Montreal Heart Institute Foundation’s generous support and this truly unparalleled Biobank, the MHI’s Research Centre continues to generate world-class innovation.”

- Jean-Claude Tardif, Director, MHI Research Centre

Over 6,000 individuals have already come on board, secure in the knowledge that the Biobank is subject to the strictest of privacy protocols.

- Donors are from all over Quebec, with an age range of 18 to 95.
- The ratio of men to women is 60 to 40.
- Data related to all conditions treated at the MHI is found in the Biobank.

MHI researchers have already made use of the data and samples from the Biobank for six of their projects. The following are three examples:

- Isolation and sequencing of genes associated with sudden cardiac death after myocardial infarction (Dr. Jean-Claude Tardif, Dr. John Rioux and collaborators)
- Dosage of angiotensin-related protein 2 (angptl2) in the vascular system as a biomarker of acute coronary syndrome (Dr. Éric Thorin and collaborators)
- Identifying genetic markers to explain the fluctuation in response to Warfarin, better known as Coumadin®, and assessing dosage accuracy (Dr. Marie-Pierre Dubé and collaborators)

# Percutaneous Aortic Valve Implantation Program

---

Whether cardiac surgery or hemodynamics, the MHI has always been a leader in the field of valvular and structural heart disease. That is why the Foundation immediately stepped in with a contribution of \$425,000 when the MHI's Percutaneous Aortic Valve Implantation Program was at risk due to lack of funding. This enabled the Institute to bridge the gap while waiting for long-term government funding.

Aortic stenosis due to degenerative valve disease is an emerging problem in our aging population worldwide and is therefore a major public health concern.

Degenerative aortic stenosis is the narrowing of the aorta resulting from calcification of the valve which often comes with aging. It is the most prevalent form of native valvular pathology in North America and Europe. Because of the poor short- and medium-term outlook for patients with severe symptomatic stenosis, the classic treatment has been the surgical replacement of the valve, a highly invasive procedure, and one that cannot be used for all patients, especially those at risk from perioperative complications.

Unlike valve replacement, the percutaneous implantation of aortic valves is minimally invasive and involves much less risk to the patient. With this program, the MHI expects to double the number of procedures it performs each year from 40 to 80.

“Considering the unique needs of the aging population, percutaneous aortic valve implantation is an effective alternative to classic open heart surgery, whose high cost to society derives not only from the surgery itself, but also from the required pre- and post-operative care, the treatment of potential cognitive, renal and other complications, as well as rehabilitation.”

- Dr. Serge Doucet, MHI Head of Hemodynamics

# A Pump that Keeps on Pumping

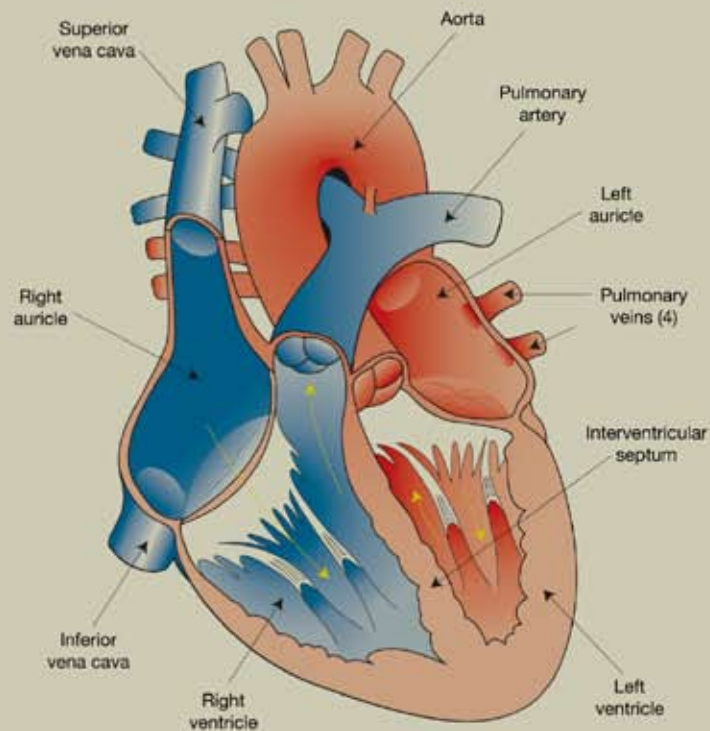
The right side of the heart receives deoxygenated or low-oxygen blood called blue blood. It then pumps it to the lungs, which surround the heart and serve to reoxygenate the blood before returning it to the left side of the heart.

The left ventricle, the strongest part of the heart, propels the blood throughout the body through the aortic valve and aorta to nourish the body's organs and cells.

For the heart to work effectively, it must not leak or get clogged. Valves come into play to ensure that the emptying and filling of the chambers occurs without too much effort or too many leaks. When valve problems occur, the heart must either pump a lot more blood—this is what happens when the valves leak—or strain to pump blood through a poorly opened or narrowed valve.

The heart has four valves in all—each has to be able to both seal tightly and open completely. The left side of the heart includes the aortic valve, which is located between the left ventricle and the aorta, and the mitral valve, located between the left atrium and left ventricle. The right side of the heart consists of the pulmonary valve, which is located between the right ventricle and pulmonary artery, and the tricuspid valve, located between the right atrium and the right ventricle.

*Translation of an excerpt from the book *Vivre avec un proche cardiaque* ("Living with a loved one who has heart disease") by Dr. Serge Doucet, Chief of Hemodynamics at the Montreal Heart Institute. Dr. Doucet has donated all proceeds from the sale of the book to the MHI Foundation.*



Graphic: MHI Audiovisual

# Events

Events were a resounding success once again this year and brought in revenues of over \$2.76M. Of this amount, activities organized by partners for the Foundation's benefit accounted for \$1.3M and Foundation events for \$1.46M (53%).



Honoree Daniel Lamarre is surrounded by family and friends at the 2009 Grand Bal des Vins-Coeurs. L. to r.: Gilles and Pauline Lamarre, Myriam Lamoureux, Sébastien, Daniel and Josiane Lamarre, Evelynne Ouellet, Marie Brunelle, Emmanuelle Dupéré and Pierre Dupéré.

Photo: Yves Beaulieu



Danielle Pagé and Daniel Lamarre (centre) with Grand Bal des Vins-Coeurs Copresidents Luc Beauregard from RES PUBLICA (left) and Stéphane Achard from Mouvement Desjardins.

Photo: Yves Beaulieu

## Grand Bal des Vins-Coeurs

A tradition was launched at the 2008 *Grand Bal des Vins-Coeurs*: paying tribute to an individual for his or her outstanding generosity, involvement and dedication to the cause of cardiovascular health. The first MHIF *Médaille d'honneur* was awarded to France Chrétien Desmarais in 2008 and, in 2009, it was Cirque du Soleil President and CEO Daniel Lamarre's turn to be honoured.

**Daniel Lamarre** became committed to fighting Canada's leading cause of death when his son Sébastien was stricken by congenital heart disease. He has served since 1994 on the Foundation's Board of Directors and has been Chair of its Communications, Marketing and Events Committee. The hugely successful *Grand Bal des Vins-Coeurs*, which raised \$1.3M this year, and the fundraising campaign featuring the ECG signature on a cheque, are but two examples

of Daniel Lamarre's significant impact on the Foundation's communications and branding.

The 9<sup>th</sup> *Grand Bal* could not have happened without its honorary co-presidents—**Stéphane Achard, Luc Beauregard, Pierre Boivin** and **Norman Steinberg**.

## Bal du Cœur 2009

Organized by **Tony Meti** since 1999, the Bal du Cœur is an annual gathering among friends. Tony Meti and his friends actually organized not one, but two Bal du Cœur events in 2009-10, one in April 2009, the other in February 2010. Combined, the two events raised over \$780,000 to help the MHI recruit and retain medical staff by awarding post-doctoral and nursing scholarships.



2010 Bal du Cœur Honorary President John A. Rae (left) and MHI Chief of Electrophysiology Dr. Peter Guerra with Bal du Cœur Fellows Dr. Anique Ducharme (top) and Dr. Katia Dyrda Langelaan (bottom).

Photo: Bal du Cœur

## IGA, Straight From the Heart

In solidarity with the People of Haiti, devastated by earthquakes in January 2010, the 24th *\$2 Straight to the Heart* campaign, originally scheduled for February 4 to 24, was postponed to February 18 and ended March 10. Thanks to the outstanding generosity of IGA clients, merchants and staff, the campaign raised **\$350 000**.



L. to r. (1<sup>st</sup> row): Gilles Brouillette, co-owner of IGA St-Jérôme, Estelle Fleurent, St-Hyppolyte IGA secretary, Isabelle Descoteaux, St-Constant IGA cashier, Danielle Picard, St-Constant IGA Manager

L. to r. (2<sup>nd</sup> row): Marlène Papineau, Sobey's Marketing Advisor, Bruno Lambert, President of the IGA Merchants Association, Yvan Ouellet, Sobey's VP Retail, Guy Terroux, Sobey's VP Marketing, Loïc Cloutier, Sobey's Director of Development.

Photo: MHI Foundation

## Golf Tournaments

Exercise, fun with friends and colleagues, and building awareness about heart disease were the perfect ingredients for six successful golf tournaments that raised a total of **\$220,000**.



Since 2007, Monaco Group Founder Ernesto Monaco has donated \$248,000 to the MHI Foundation. He is shown here with his son Dominic and MHI Executive Director Danielle Pagé.

Photo: Monaco Group

Golf Kanawaki - \$91,000

Monaco Group Golf Classic - \$89,000

Gabriel Buisson golf tournament - \$20,000

Maria De Risi golf tournament - \$10,000

Roland-Beaulieu Golf Omnium - \$8,050

Desjardins Caisse d'économie du Rail golf tournament - \$600

## Hope on Ice

Skating champion Joannie Rochette joined the Canadian premiere of HOPE, an inspiring multimedia presentation on ice, which took place on May 30, 2009 and was dedicated in loving memory of two young stars who died from heart disease: figure skating choreographer Jean-Pierre Boyer (1969-2008) died suddenly at age 38 from a heart attack; and figure skating / ice dance competitor Michael Bilodeau (1991-2007) died at age 16 after a long struggle with congenital heart disease.

Produced by Stéphane Vachon, artistic director, figure skater, visual artist and choreographer, the event highlighted the work of the Montreal Heart Institute to build awareness about heart disease.



Photo: Susan Ashe

## Jeans, ice cream and barbecue: NatreI milked every opportunity!

By holding a variety of activities like a dress-down day where employees wear jeans if they donate \$5, an ice-cream tasting, a barbecue and a heart-smart breakfast with a side order of cholesterol tests, NatreI employees managed to raise \$10,220, which Agropur matched for a total donation of more than **\$20,000**.

## CD, breakfast, lunch, weddings, retro night and more

The Foundation also benefited from the creativity of numerous individuals who wanted to raise funds for a good cause: walk-a-thons, bike-a-thons, bowling and pool tournaments, shows, community projects, weddings—the list goes on! Thanks to so many great ideas by so many great people who want to fight heart disease, the MHIF received a further \$17,000 in donations.

Gaston Gauthier - Benefit supper	\$3,370
Denise and Pierre Bally - Golden wedding anniversary	\$2,265
Entrepreneurs' Organization (EO) - Breakfast conference	\$2,000
Jocelyne Goulet - Show	\$1,250
L. Crevier, D. Tringle, M.-A. Mercier, E. Chicoine, M. Lacroix-Faucher - Bike-a-thon	\$1,226
Robert Witheman - Retro evening	\$1,000
Wedding of Maria and Franco	\$1,000
Association Benevole Donne Siciliane - Women's Day	\$1,000
Ghislaine Giroux - Coups de cœur CD	\$1,000
Denis Bouchard - Paquet voleur TV show	\$800
Janine Hébert and Diane Dumouchel - Quilt draw	\$689
Isabelle Lepore and colleagues of Galeries d'Anjou Scotia Dealer Advantage	\$551
Michel Hébert - Strike Nine bowling event	\$340
Patrice Bujold - Biking in Gaspésie	\$300
Richard St-Pierre - Pool tournament	\$100
Josée Marquis - Walk-a-thon	\$100
Diane Ouellette - Baby Shower	\$100
Sasha Ladina - Community project	\$40



Employees of the NatreI Division of Agropur met for lunch to celebrate their fundraising for the heart and gave a \$20,256 cheque to the Foundation. Staff from the MHI Prevention Department were on hand to give cholesterol tests.

Photo: MHI Foundation

# Fostering Excellence

---

In 2009-10, a total of \$7.2M was transferred to the Montreal Heart Institute for research, patient care, prevention and teaching. Contributions also serve as financial leverage to secure further funding from MHI partners.

Throughout the annual report, you will learn more about some of these contributions, including those made toward the percutaneous valve implantation program, the new surgery wing, the enhancement of the MRI infrastructure, the prevention program, the MHI Biobank and the installation of decentralized automated medication dispensing cabinets.

## Awards, Scholarships and Fellowships

---

Through fellowships and scholarships funded by **TD Bank**, the **Bal du Coeur Fund** and other donors, the Foundation recognizes the pursuit of excellence in research while fostering the specialized training of MHI professionals.

### Bal du Coeur Fellowships

---

Focussing on MHI priorities, the Bal du Coeur Fellowships are awarded to clinical physicians pursuing postdoctoral studies, specialized training or clinical research.

#### Dr. Anique Ducharme – \$10,000

For a clinical overspecialization in cardiac transplantation under the guidance of Dr. David O. Taylor at the Cleveland Clinic in Ohio.

#### Dr. Katia Dyrda Langelaan – \$50,000

For a two-year fellowship in electrophysiology under the guidance of Dr. K. Zeppenfeld at the Leiden University Medical Centre in The Netherlands, where she will gain clinical expertise in epicardial ablation of ventricular tachycardia.

#### Dr. Nicolo Piazza – \$50,000

For a one-year fellowship at the Leipzig Medical Centre in Germany under the guidance of Professor Gerhard Schuler. The training will allow him to develop clinical expertise in percutaneous aortic valves implantation.

### Martial G. Bourassa Award

---

Recognizing excellence, this grant helps a researcher develop and conduct clinical or basic research, while recognizing his or her contribution to the MHI scientific community.

#### Dr. Martin G. Sirois – \$25,000

Dr. Sirois' work focuses on the cellular mechanisms that regulate inflammation and the formation of blood vessels as a possible treatment for various cardiovascular diseases, including coronary thrombosis. The ripple effect of Dr. Sirois' research could reach beyond cardiovascular diseases to the treatment and

prevention of rheumatoid arthritis, diabetic retinopathy and psoriasis.



L. to r.: Dr. Martial G. Bourassa, Dr. Martin G. Sirois and Danielle Pagé.  
Photo: MHI Audiovisual

# Prevention

---

Pledges totalling \$3.2 million from **BMO Financial Group (\$2M), Scotia Bank (\$500K), Manulife Financial (\$250K), Fondation de la famille Lemaire (\$250K), and Sun Life Financial (\$200K)**, combined with annual contributions from other donors, enable us to support the work of the MHI's Prevention team headed by Dr. Martin Juneau. Their work consists in:

- providing primary and secondary prevention services for first-time cardiac patients (primary) and for those with cardiac pathologies (secondary)
  - secondary prévention clinic for all MHI patient
  - metabolism clinic
  - hypertension clinic
  - smoking cessation clinic
  - training for heart transplant recipients, patients who have suffered heart failure and those with congenital heart problems
- providing leadership by bringing prevention initiatives to Quebec communities through the MHI's Acti-Menu programs – *Défi 5/30, Défi J'arrête, j'y gagne* and *Famille sans fumée*
- sponsoring, on behalf of the MHI, the *Grand Défi Pierre Lavoie*, which visits over 1,110 primary schools in Quebec, reaching over 350,000 children in the process
- sponsoring and helping to develop regional prevention centres like Ferme Neuve and Mont-Laurier, and those at the Pierre-Boucher Hospital, Le Gardeur Hospital, Lanaudière Regional Hospital and Ste-Hyacinthe's Honoré Mercier Hospital

- providing health professionals, students and graduates with theoretical education and practicums
- maintaining research partnerships with MHI research groups and other partners, aimed at studying the effects of
  - lifestyle and medication
  - cold weather on various cardiovascular pathologies, including extreme cold, with or without winds
  - a Mediterranean-style diet on the progression of cardiovascular disease
  - aquatic fitness training
  - atherosclerosis, cardiac failure, electrophysiology, genetics, pharmacogenetics and congenital heart pathologies
- partnering with Stanford University to develop a pilot project aimed at reducing overcrowding in the MHI's Emergency department, a project that could serve as a test case for the entire country

It should come as no surprise that the MHI was the first health centre in Canada to be recognized by the World Health Organization (WHO) for its prevention program.

“Thanks to the ongoing support of the professionals from the Montreal Heart Institute's Prevention Department, we've succeeded in establishing an integrated prevention program in the Upper Laurentians region. This program is on its way to becoming a benchmark for a number of regions in Quebec.”

- Dr. Luc Laurin, Head of the Regional Department of General Medicine for the Laurentians

---

Partners in Prevention (l. to r.): Dr. Martin Juneau, MHI Director of Prevention, L. Jacques Ménard, President of BMO Financial Group, and Louis A Tanguay, the Foundation's Board Chair. ►

Photo: John Morstad



BMO Groupe financier

10 septembre 2008

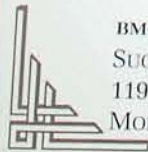
PAYEZ À L'ORDRE DE

Fondation de l'Institut  
de cardiologie de Montréal

2 000 000 \$

Deux millions

00 /100 DOLLARS



BMO Banque de Montréal  
SUCCURSALE PRINCIPALE DE MONTRÉAL  
119, RUE ST-JACQUES TÉL. : (514) 877-7373  
MONTRÉAL (QUÉBEC) H2Y 1L6

*L. Jacques Ménard*  
L. Jacques Ménard

## J. -Louis Lévesque Prize

---

In recognition of the best oral presentations in clinical and basic research.

**Daniel Yacoub, 1st Prize  
Fundamental Research - \$750**

CD40L primes platelets and enhanced agonist-induced activation and aggregation through CD40-mediated shape change and filopodia formation.

**Louis-Philippe Lemieux-Perreault, 1st Prize  
Clinical Research - \$750**

Genetic study of the dynamic left ventricular outflow tract obstruction.

**Roselle Gélinas, 2nd Prize  
Fundamental Research - \$500**

Targeted lipidomic study of unexpected metabolic alterations in mouse heart VLCAD (very-long chain acyl-CoA dehydrogenase).

## Nicole Bureau-Tobin Prize

---

Recognizes the excellence of a research project in nursing initiated and developed at the MHI, which will have an impact on nursing in the short term.

**Joëlle Jolicoeur - \$1,000**  
Skills-based training program for nurses who are new to cardiac surgery intensive care.

## Research Fellowships and Scholarships

---

### Research Fellowships and Scholarships

**Dr. Ricardo Costa - \$7,309**  
Preliminary results of the hydroxyapatite non polymer-based sirolimus - eluting stent for the treatment of single de novo coronary lesions, a first-in-human of a third-generation drug-eluting stent system.

**Dr. Konstantinos Marmagkilios - \$29,284**  
Perforation of sphenous vein graft case series.

**Dr. Adriana Moraes - \$13,407**  
SVACIRC - Hospital Cohort genetic and molecular study of aortic stenosis.

### Research Scholarships - \$12,000 each

**Mariana Chagas** - Identification and characterization of risk factors associated with inflammatory diseases in relation to the major histocompatibility complex.

**Élisabeth Dumas** - Effect of angiotensins on neutrophil survival.

**Julie Graham** - The role of inflammation on effort capacity and post-effort recovery in patients suffering from diastolic-type heart failure.

**Jacinthe Lachance** - Infarction post-traumatic stress disorder (PTSD): impact on the prognosis and use of medical services.

**Kim Lachance** - Identification of genetic and non genetic factors associated with renal dysfunction in heart transplant recipients.

**Véronique Lavoie** - Functional effects of adonectin on endothelial progenitor cell.

**Sophie Mathieu** - Influence of angiotensin II type I receptor (AT1R) overexpression on L- and T-type calcium currents on the ventricles of male and female mice.

**Eve L. Normandin** - High-intensity interval training (HIT) in heart patients: optimization of the protocol and acute physiological responses.

**Corinne St-Denis** - Role of estrogen in adipose-derived stem cells differentiation into endothelial cells.

**A. Tadevosyan** - Role of IP3-related nuclear-delimited calcium entry in transducing gene expression response to nuclear angiotensin receptor activation.

**Kim Tardif** - Potential of a Chitosan-Phosphorylcholine biopolymer combined with estradiol to accelerate vascular healing upon delivery of progenitor cells.

## Nursing Scholarships

Name	Study Program	Scholarship
Mélanie Charcalis	Masters	\$7,500
Évelyne Dufresne	Masters	\$7,500
Émilie Laberge	Baccalaureate	\$3,000
Sophia Merisier	Masters	\$7,500
Claudia Reuzé	Baccalaureate	\$3,000
Suzanne Rocha	Certificate	\$1,000
Claudie Roussy	Baccalaureate	\$3,000
Louise Roy	Post-surgery AIC certificate	\$1,000



## Tuition Fees

The Foundation also funded a total of \$6,500 in tuition fees for 27 nurses and 4 inhalotherapists.

*TD Bank Scholarship winners Evelyne Dufresne (top) and Mélanie Charcalis (bottom) with Jean-François Laurin, TD Bank Senior Manager, Sales and Service, and MHIF Executive Director Danielle Pagé.*

*Photo: MHI Audiovisual*



## Perfusion Scholarship

Francis Langlois - \$10,000

## ACLS\* Training Scholarships - \$1,000 each

Christiane Alie  
 Zohra Benakezouh  
 Marie-Chantal Blanchet  
 Danielle Boudreault  
 Mélanie Cloutier  
 Gabriel Couture  
 Béatrice Dagrain  
 Virginie Harris  
 Danielle Houle  
 Josée Houle  
 Redouane Jamali  
 Émilie Lacharité-St-Louis  
 Julie Laliberté  
 Lyne Latendresse  
 Virginie Milette  
 Nadia Perreault  
 Patrice Perrier  
 Chantal St-Jean  
 Charli Tannoury  
 Amélie Veilleux

\*Advance Cardiac Life Support

# Magnetic Resonance Imaging

---

The MHI Foundation subsidized the entire cost of enhancing the Institute's magnetic resonance imaging (MRI) infrastructure for a total of \$600,000.

MRI is a medical imaging technique used to obtain detailed images of the internal structure of the body by means of a magnetic field generated by an electromagnet; radio waves are sent through the field, which makes the body's hydrogen atoms "resonate."

MRI of the heart, aorta, coronary arteries and blood vessels is a fast, non-invasive tool for diagnosing heart and coronary problems. Doctors can examine the size and thickness of the heart's cavities and determine the extent of the damage caused by a heart attack or progressive heart disease.

Ninety percent (90%) of clinical MRI activities at the MHI concern the heart. Some 2,000 MRI exams were conducted in 2009-2010, a statistic that increases with every passing year.

The improvements carried out in December 2009 facilitate a more precise diagnosis adapted to the patient's needs.

- Helps specialists obtain ultra-high-quality cardiac images, in terms of both definition and resolution (highly sensitive 32-channel devices, as opposed the older 5-channel devices).
- Increases the speed at which an imaging sequence can be carried out.
- Simplifies the production of additional sequences, which are used to obtain further details on specific points of interest.
- Offers additional options for angiography and for visualizing the cardiac muscle.

“Thanks to funding from the MHI Foundation, this technological advance led to the signing of a draft agreement between the Radiology and Medicine departments for the creation of a joint Excellence in Cardiac MRI Program that will become part of the future MHI Centre of Excellence in Cardiovascular Imaging.”

- Dr. Pierre Bourgouin, MHI Chief of Radiology

MRI Equipment ►

Photo : MHI Audiovisual



PHILIPS



# Financial Statements

Balance Sheet at March 31, 2010	2010	2009
<b>Assets</b>		
Investments	<b>\$96,859,561</b>	\$78,716,127
Cash	<b>\$1,655,234</b>	\$470,031
Receivables	<b>\$1,706,883</b>	\$997,202
Stocks	<b>\$24,844</b>	\$21,680
Prepaid expenses	<b>\$147,701</b>	\$96,660
	<b>\$100,394,223</b>	\$80,301,700
<b>Liabilities</b>		
Accounts payable and accrued liabilities	<b>\$3,802,654</b>	\$1,220,031
Deferred revenues	-	\$189,850
	<b>\$3,802,654</b>	\$1,409,881
<b>Net Assets</b>		
Restricted	<b>\$82,514,761</b>	\$70,523,793
Unrestricted	<b>\$14,076,808</b>	\$8,368,026
	<b>\$100,394,223</b>	\$80,301,700

## Contribution Policy

The Foundation's 2009-10 contributions to the Montreal Heart Institute totalled \$7.2 M, most of which funded research and technological development. Contributions are expensed when funds are transferred to the Institute.

## Reducing Costs

In 2009-10, careful management enabled the Foundation to streamline administrative costs to approximately 9% of gross revenues.

## Statement of Revenues and Expenses For the year ended March 31, 2010

	2010	2009
<b>Revenues</b>		
Donations	<b>\$9,264,350</b>	\$9,682,811
Fundraising activities	<b>\$4,361,162</b>	\$3,570,312
Will bequests	<b>\$1,399,837</b>	\$308,213
Investment income	<b>\$3,859,060</b>	\$1,281,348
	<b>\$18,884,409</b>	<b>\$14,842,684</b>
Less direct and semi-direct fundraising costs (note 1)	<b>\$2,061,362</b>	\$814,531
	<b>\$16,823,047</b>	\$14,028,153
<b>Net Operating Revenues</b>		
<b>Administration Costs</b>	<b>\$1,702,382</b>	\$1,661,928
Excess of revenues over expenses before contributions	<b>\$15,120,665</b>	\$12,366,225
Contributions to the MHI – Research, technological development and other	<b>\$7,241,072</b>	\$7,859,538
	<b>\$7,879,593</b>	<b>\$4,506,687</b>
Excess of revenues over expenses		
Balance, beginning of year	<b>\$78,891,819</b>	\$84,550,814
Variation on realized and unrealized gains on investments	<b>\$9,820,157</b>	(\$10,165,682)
	<b>\$96,591,569</b>	<b>\$78,891,811</b>
<b>Balance, end of year</b> (note 2)		

Note 1: The Foundation began operating the MHI parking lots on July 1st, 2009. It incurred \$879,410 in expenses related to this activity for the period of July 1, 2009 to March 31<sup>st</sup>, 2010.

Note 2: Copies of the financial statements are available from: The Secretary, Montreal Heart Institute Foundation, 5000 Bélanger Street, Montreal, Quebec, H1T 1C8.

# Our Volunteers

---

Every year in Quebec, some two million people put in over 300 million hours of volunteer work. Closer to home, the 130 individuals listed below volunteered 9000 hours to help Foundation staff. Board and Committee Members are listed on page 4. Not included in the Annual Report are the hundreds of employees and associates who are dedicated to our cause through various partnerships.

Our heartfelt thanks to all our volunteers for joining us in the fight against heart disease.

Corinne Babin  
Carmen Bau  
Doris Beauregard  
Jean-Marc Béland  
Ann Bergeron  
Georges Bergeron  
Ghislaine Bergeron  
Claudette Bilodeau  
Louise Blanchard  
Raymond Boily  
Bernadette Bouchard  
Pierre Boudreau  
Pierrette Boulay  
Jeanne Bouvier  
Louise Brisebois  
Raymond Brisebois  
Benjamin Brodeur-Poupart  
Guy Bujold  
Jeannette Bujold  
Pierre Cadieux  
Vittorio Capparelli  
Jean-Pierre Carignan  
Marie Carignan  
Lucille Casgrain  
Denise Cayer  
Jeannette Chabot  
Cécile Collard  
Antonina Consoglio

Rita Corbeil  
Denise Cornellier  
Hélène Couillard  
Thérèse Coutu  
Vincent Couture Gagnon  
Clara De Ambrosi  
Linda De Luca  
Katia Dekkers  
Nicole Desgagnés  
Hélène Désilets  
Chantal Desmarais  
Sylvie D. Cadieux  
Florent Dupuis  
Carole Dussault  
Jocelyn Ellefsen  
Eduardo Fernandez  
André Florant  
Cécile Forest  
Lise Forest  
Guy Fortier  
Claude Fortin  
Madeleine Foster  
Mireille Fournel  
Nicol Gariépy  
Dany Gaudreault  
Jacqueline Gauthier  
Ghislaine G. Cossette  
Annie Giguère

Aline Gosselin  
Thérèse Gratton  
Jean-François Guignard  
Ninon Harnois  
Josée Iaricci  
Lorraine Lake  
Lorraine Lamontagne  
Fleurette Lamoureux  
Marthe Lapensée  
André Lapointe  
Stéphane Laprise  
Richard Larouche  
Marlène Laurenzana  
Madeleine Lauzon  
Louise Lebrun  
Thérèse Lecours  
Christine Lefebvre  
Ginette Lefebvre  
Renée Legault  
Thérèse Legros  
Monique Lemieux  
Danielle Lemoyne  
Marguerite Leporé  
Philippe Leporé  
Luigi Longo  
Michelle Loranger  
Rosiane Machabée  
Fouad Mardini

Ghislaine Martel  
Gisèle Martineau  
Marcel Moretti  
Joseph Mormina  
Lucie Mousseau  
Serge Paré  
Gaston Pelletier  
Pierrette Pelletier  
Christiane Perreault  
Véronica Pinzon  
Françoise Poirier  
Monique P. Leblanc  
Louise Privé  
Gisèle Provost  
Jean-Marie Rivard  
Denise Roy  
Annette Sauro  
Christiane Sauvé  
Mario Sébastiani  
Maryse Senneville  
Claire Simard  
Rolande Simard

Audrey Sirois  
Caroline Sirois  
Dany Sirois  
Martine Sirois  
Ginette St-Hilaire  
Luc St-Onge  
Micheline St-Pierre  
Nicole St-Pierre  
Roch St-Pierre  
Irina Tcaci  
Sonia Teolis  
Claudette Thibault  
Suzanne Thibault  
Wallace Thompson  
Thérèse Tousignant  
Pauline Trottier  
Françoise Girard  
Claire Vanasse  
Lise Venne  
Carole Villani  
Khadya Yassini

Volunteers take a break in the MHI Gift Shop. L. to r.:  
Jean-Pierre Carignan, Danielle Pagé (Executive Director),  
Claudette Thibault, Lise Venne, Jolibeth Almeida-Chaparro,  
Louise Lebrun, Nicol Gariépy, Serge Paré and Katia Dekkers. ►

Photo : MHI Foundation



# Automated Medication Dispensing

Thanks to the leveraging effect of a \$125,000 contribution from the MHI Foundation, the Montreal Heart Institute was able to introduce AcuDose-Rx decentralized automated medication dispensing cabinets in all patient care units. This project, spearheaded by the *Agence de la santé et des services sociaux de Montréal*, focuses on robotic prescription dispensing systems.

Such automated dispensing cabinets free up nursing personnel and pharmacists for other tasks, while accelerating and streamlining medication processing and distribution. The decentralized automated cabinets (DACs) provide:

- *improved access to medications*: rather than having to rely on two outdated traditional cabinets, nursing staff can medicate patients more quickly once the prescription has been approved by the pharmacy, by downloading the prescription from any of nine DACs located strategically throughout the MHI;

- *enhanced security*: the system receives computerized instructions from the pharmacy, making it impossible for any drawer but the one containing the prescribed medication to open;
- *more effective narcotics management*: nursing staff no longer need to count narcotics manually at the end of every shift, as each DAC does it automatically.



“At the end of the day, patients are the ones who benefit most from this technology because medication is dispensed quickly and safely, which frees up nurses to spend more time caring for their patients.”

- Lucie Verret, Head of the MHI Pharmacy Department

The Head of the MHI Pharmacy, Lucie Verret observes as Nurse Corrie Heeremans downloads the prescription for an intensive care patient from an AcuDose-Rx decentralized automated medication dispensing cabinet. ►

Photo: MHI Foundation



**Resolução nº 1.200, de 12 de maio de 2009**

O Presidente do Conselho Nacional de Saúde (CNS) e o Presidente do Conselho Nacional de Ética em Pesquisa (CONEP) resolvem, de comum acordo, o seguinte:

**Art. 1º** - O Conselho Nacional de Saúde (CNS) e o Conselho Nacional de Ética em Pesquisa (CONEP) resolvem, de comum acordo, o seguinte:

**Art. 2º** - O Conselho Nacional de Saúde (CNS) e o Conselho Nacional de Ética em Pesquisa (CONEP) resolvem, de comum acordo, o seguinte:

**Art. 3º** - O Conselho Nacional de Saúde (CNS) e o Conselho Nacional de Ética em Pesquisa (CONEP) resolvem, de comum acordo, o seguinte:

# Our Sponsors

---

Air France  
Astral Media  
AstraZeneca Canada  
Best Brands  
Bombardier  
Bristol-Myers Squibb Canada  
Cadillac-Fairview  
CBC  
CGI  
Chenoy's  
Cirque du soleil  
Daccord Webster Paysage  
Global  
Hotel Auberge Universel  
Hotel le Bristol Paris  
IGA Merchants  
Imprimerie Dumaine  
Investors Group  
Italvine  
La Presse  
Merlicom  
Mouvement Desjardins  
Multiboxit.com  
Multiple-media.com  
Naya Waters Inc.  
Planterra  
Power Corporation of Canada  
Publicis  
Quebecor Media inc.  
Radio-Canada  
RDS-RIS

Rémi Brault, photostream  
Robert Guy Scully  
Sanofi-aventis  
Saputo Inc.  
SAQ  
San Remo Florist  
Sobey's  
S Sens  
Sybille Sasse Agency  
Télé-Québec  
The Gazette  
Transcontinental inc.  
V Télé



[Home](#) | [Contact us](#) | [Comments](#) | [Français](#)

[MAKE A DONATION](#)

[Institute](#) | [Text Size](#)

[ABOUT US](#)

[CAMPAIGNS AND EVENTS](#)

[SAVING LIVES](#)

[PARTNERS AND DONORS](#)

[HOW YOU CAN HELP](#)

Investing in a pillar  
of healthcare

[www.mhifoundation.org](http://www.mhifoundation.org)



MONTREAL  
H E A R T  
INSTITUTE  
FOUNDATION

5000 Belanger Street  
Montreal, Quebec HIT 1C8  
Tel.: 514.593.2525  
Toll free: 1.877.518.2525  
Fax: 514.376.5400  
ficmdon@icm-mhi.org

Charitable number - 10183 7896 RR0001  
[www.mhifoundation.org](http://www.mhifoundation.org)



Concept Design : Merlicom  
Disponible en français.